



JOHN PSARRAS
S&P CHARTERING



IN PIRAEUS SINCE 1981

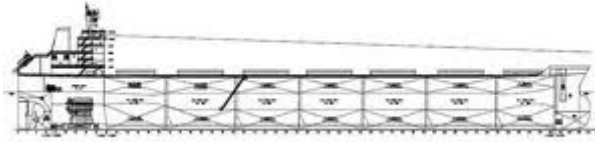
Ph:+30 210 4123696 4133931 4115482 Fx:+30 210 4170618
E'Mail: psarras@psarrasj.gr Website:www.psarrasj.gr
(Members of Hellenic Shipbrokers Association - 1984)

BI-MONTH REPORT

MID JULY 2016

The scope of this report is to assist our clients and friends with a quick glance every about 15 days to get a feeling of the market by reading the more interesting sales in view of higher or lower prices of the main vessels types as well as the demolition prevailing prices.





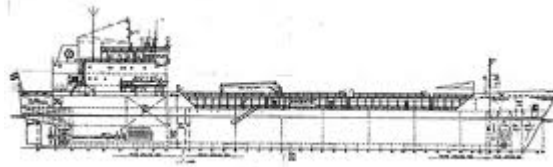
BULK CARRIERS

| NAME | DWT | Y.O.B | P.O.B | PRICE |
|------------------|--------|-------|-------------|-------------------------------|
| SEA PULL | 177533 | 2006 | JAPAN | 13,75 MIL USD TO SINGAPOREANS |
| AO HANG MA | 93291 | 2011 | CHINA | 8,6 MIL USD TO GREEKS |
| KAI YO | 81800 | 2003 | JAPAN | 5 MIL USD TO CHINESE |
| ALPHA EFFORT | 72844 | 1999 | S.KOREA | 3,3 MIL USD TO CHINESE |
| VENICE TIZIANO | 63800 | 2016 | CHINA | 16 MIL USD TO S.KOREAN |
| RACHEL | 52481 | 2006 | PHILIPPINES | 5,25 MILL USD TO UNDISCLOSED |
| WINGSAIL | 48225 | 1999 | JAPAN | 2,35 MIL USD TO INDONESIANS |
| TRADING FABRIZIA | 34529 | 2011 | S.KOREA | 8,5 MIL USD TO UNDISCLOSED |
| CS SALINA | 32355 | 2004 | JAPAN | 4,85 MIL USD TO GREEKS |
| FREE MAVERICK | 23994 | 1998 | JAPAN | 1,6 MIL USD TO UNDISCLOSED |



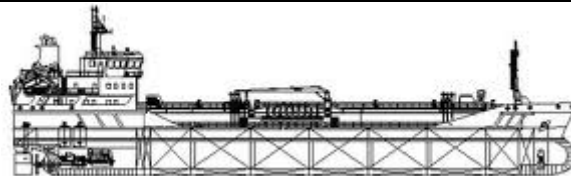
CONTAINER SHIPS

| NAME | DWT | TEU | Y.O.B. | P.O.B | PRICE |
|-----------------------|-------|------|--------|---------|-------------------------------|
| WEHR WESSER WEHR ELBE | 33670 | 2524 | 2001 | GERMANY | EN BLOC 3,75 MIL USD TO SWISS |
| ANNABELLA S | 11273 | 868 | 2006 | GERMANY | 7,2 MIL EURO TO DUTCH |



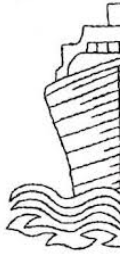
GENERAL CARGO

| NAME | DWT | Y.O.B | P.O.B | PRICE |
|-----------|-------|-------|----------|----------------------------|
| BLUE FURY | 16371 | 2011 | CHINA | 3,9 MIL USD TO UNDISCLOSED |
| ARROW | 9412 | 1996 | BULGARIA | 1,6 MIL USD TO EGYPTIANS |



TANKERS

| NAME | DWT | HULL | Y.O.B | P.O.B. | PRICE |
|------------------|--------|------|-------|---------|---|
| SEATRIUMPH | 149953 | DH | 2002 | S.KOREA | 30,7 MIL USD TO RUSSIAN BUYERS |
| ZALIV AMURSKIY | 104530 | DH | 2008 | S.KOREA | EN BLOC 215 MIL USD TO RUSSIANS VIA AUCTION |
| ZALIV AMERIKA | 104530 | | 2008 | | |
| ZALIV BAIKAL | 104530 | | 2009 | | |
| ZALIV VOSTOK | 104530 | | 2009 | | |
| PRISCO ELENA | 50950 | | 2009 | | |
| PRISCO | 50950 | | 2008 | | |
| ALEXANDRA | 50950 | | 2008 | | |
| PRISCO | 50950 | | 2009 | | |
| EKATERINA | 50950 | | 2009 | | |
| PRISCO ELIZAVETA | | | | | |
| PRISCO IRINA | | | | | |
| TEESTA SPIRIT | 46291 | DH | 2004 | S.KOREA | 14,1 MIL USD TO GREEKS |
| MTM WESPORT | 19362 | DH | 2000 | JAPAN | 13 MIL USD TO UNDISCLOSED |
| HARBOUR LEGEND | 10052 | DH | 2004 | TURKEY | 5,5 MIL USD |
| SARA | 6608 | DH | 1990 | ITALY | 2,5 MIL USD TO UNDISCLOSED |



DEMOLITION



BANGLADESH

| NAME | LDT | DWT | Y.O.B | P.O.B. | PRICE |
|--------|------|-------|-------|--------|--------------------------|
| MINBEI | 7358 | 42609 | 1986 | JAPAN | 250 USD PER LDT |



INDIA

| NAME | LDT | DWT | Y.O.B | P.O.B. | PRICE |
|---------------|-------|-------|-------|-------------|---|
| DS PATRIOT | 27200 | 80551 | 2001 | S.KOREA | 259 USD PER LDT (AS IS CHINA) |
| SPRING BAY | 2367 | 5450 | 1987 | NETHERLANDS | 252 USD PER LDT |

Disclaimer

All information stated in this report has been collected from a variety of maritime sources and is presented in good faith and without any guarantee from our part .

J. PSARRAS S+P CHARTERING, shall not accept any responsibility for any errors and/or omissions arising from this report and cannot be held responsible for any action taken and/or losses occurred as a result of the details included in this report.

Recirculation of same is not permitted without the written agreement of the aforementioned company, which is the only entitled one to produce copies of same.